



**HIGH
RATE
MAX^{XT}**



UPS12-720MRX

Valve Regulated Lead Acid Battery

Designed for UPS Standby Power Applications

FEATURES AND BENEFITS

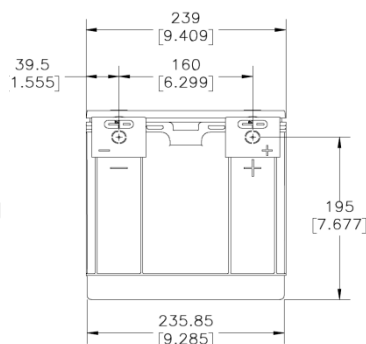
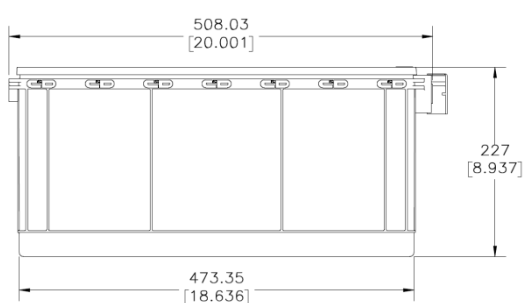
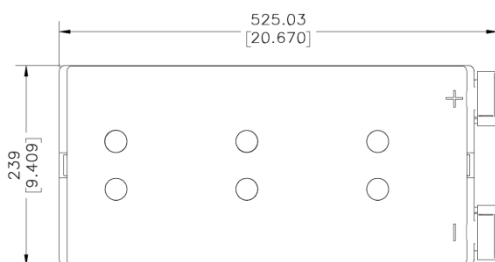
APPLICATIONS

- Data Centers
- Network Operation Centers
- Industrial Process Control Facilities
- Internet Housing Sites
- Semiconductor Manufacturing
- Banks and Financial Markets
- Power Generation Plants
- Hospital and Testing Laboratories
- Emergency Response Center

- 12-year design life @ 25°C
- Eurobat classification: Long life
- Absorbent Glass Mat (AGM) technology for efficient gas recombination of up to 99% and freedom from electrolyte maintenance
- C&D's Long-Life Alloy having very low calcium levels in the industry -minimizing grid growth, reducing gassing, and extending battery life
- UL Recognized Flame-arresting vents in each cell for safety and long life
- Designed with the same recombination, thermal runaway prevention, gassing and flame-retardant characteristics of the Bellcore 4228 compliant Dynasty Telecom products
- Flame retardant polypropylene case and cover compliant with UL94 V-0
- Proprietary Fixed Orifice Plate Pasting technology applying active materials on both sides of the grid for consistent cell-to-cell performance, higher capacity and uniform grid protection
- Thermally welded case-to-cover bond to eliminate leakage
- Front Access Design, for easy installation and safety maintenance, and space saving
- Not restricted for air transport -Complies with IATA/ICAO Special Provisions A67
- Not restricted for surface transport - Classified as non-hazardous material as related to DOT-CFR Title 49 parts171-189
- Not restricted for water transport -Classified as non-hazardous material per IMDG Amendment 27

Specifications

Cells per Unit	Voltage	Weight	15min WPC@ 1.67EPV	Capacity (C20,1.75V,25°C)	Capacity (C10,1.80V,25°C)	IEC Rating (C10,1.80V, 20°C)	IEC Short Circuit Current	IEC Resistance
6	12V	67.3 Kg	720 W/cell	234 Ah	217 Ah	210 Ah	5300 Amps	2.7 (mΩ)



*All dimensions in millimeters and (inches). All dimensions are for reference only. Contact a C&D Representative for complete dimensional information.

Specifications

Operating Temperature Range with temperature compensation	Discharge: -40°F (-40°C) to +160°F (71°C) Charge: -10°F (-23°C) to +140°F (60°C)
Nominal Operating Temperature Range	+74°F (23°C) to +80°F (27°C)
Recommended Maximum Charging Current Limit	C/5 amperes @ 20hr rate
Float Charging Voltage	13.65 ± 0.15 VDC average per 12V unit
Maximum AC Ripple (Charger)	0.5% RMS or 1.5% P-P of float charge voltage recommended for best results. Max voltage allowed = 1.4% RMS (4% P-P) Max current allowed = C/20
Self Discharge	Battery can be stored up to 4 months at 77°F (25°C) before a freshening charge is required. Batteries stored at temperatures greater than 77°F (25°C) will require recharge sooner than batteries stored at lower temperatures. See C&D brochure 41-7272, Self-Discharge and Inventory Control for details.
Equalize charge and cycle service voltage	14.40 to 14.80 VDC average per 12V unit @ 77°F (25°C)
Terminal	Threaded copper alloy insert terminal to accept M8 bolt
Terminal Hardware Initial Torque	160 in.-lbs. (18 N-m)

Constant Power Discharge Table - Watts Per Cell @ 25°C (77°F)

Operating Time to End Point Voltage

EPV	5 min	10 min	15 min	20 min	25 min	26 min	30 min	45 min	60 min	90 min	2 hr	3 hr	4 hr	5 hr	8 hr	10 hr	12 hr	20 hr
1.85	758.9	710.6	612.4	517.7	447.3	439.0	402.5	317.0	267.6	198.4	160.4	115.1	90.2	74.6	50.1	41.5	35.5	22.6
1.80	990.9	802.8	669.9	563.8	485.4	476.1	435.6	338.5	283.0	209.1	168.7	120.7	94.4	78.0	52.2	43.1	36.9	23.4
1.75	1093.2	847.6	695.6	584.5	502.5	492.7	450.4	348.1	290.0	212.9	170.9	122.5	95.8	79.0	53.1	43.9	37.5	23.8
1.70	1152.1	878.3	712.3	598.7	514.8	504.9	461.6	354.2	293.5	215.5	173.1	123.7	96.7	79.9	53.6	44.3	37.9	24.0
1.67	1170.9	891.0	720.0	604.8	519.8	509.7	465.9	356.2	294.4	216.3	173.7	124.2	97.1	80.2	53.7	44.3	37.9	24.1
1.65	1184.1	899.3	727.4	609.8	523.2	512.9	468.3	358.2	296.2	217.3	174.4	124.5	97.3	80.4	53.8	44.4	38.0	24.1

Constant Current Discharge Table - Amps @ 25°C (77°F)

Operating Time to End Point Voltage

EPV	5 min	10 min	15 min	30 min	60 min	90 min	2 hr	3 hr	4 hr	5 hr	6 hr	7 hr	8 hr	10 hr	12 hr	20 hr	24 hr
1.90	261.6	261.6	257.8	181.4	120.9	88.1	70.4	51.9	41.7	34.6	29.6	26.0	23.2	19.0	16.2	10.1	8.6
1.85	391.3	375.3	309.8	204.4	136.4	99.6	79.7	57.3	46.0	38.0	32.6	28.4	25.3	20.7	17.6	11.0	9.3
1.80	521.1	450.2	352.6	226.8	145.1	105.1	83.6	60.6	48.5	39.9	34.1	29.8	26.6	21.7	18.4	11.5	9.7
1.75	603.1	474.7	369.4	232.0	149.0	107.4	85.1	61.9	49.5	40.8	34.8	30.5	27.0	22.2	18.8	11.7	9.9

Note: Batteries to be mounted with 0.5 in. (1.25 cm) spacing minimum and free air ventilation. Specifications subject to change without notification.